

User Instruction

Quantum – electronic lock

ATTENTION: Please read this operating instruction carefully, before you operate the lock or you try to tailor a new combination of numbers. We do not undertake any liability for functional disorder because of faulty switch over or use of violence or improper use and neither for damage nor for loss of property which could be put down i.e. to the not proper closing of the safe.



OPEN

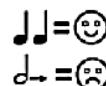
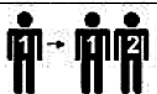


fig. A



ADD SECOND USER

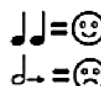
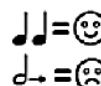
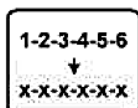


fig. B



CHANGE CODE

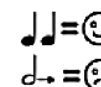
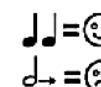


fig. C



DELETE SECOND USER

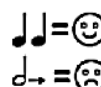


fig. D



=

Press and hold until double signal and light stays ON



The lock operates with a numeric six-digit code.
 A secondary code can be added.
 Each key press is confirmed with an audio and light signal.

GENERAL

After entry of a valid code a double signal follows. An invalid entry is followed by a long signal. After 10 seconds without entry, an already started code entry is cancelled.

Open: (see fig. A)

Enter code (factory code = 1-2-3-4-5-6), unlock door and open. If not opened within 3 seconds, the lock secures automatically. If code entry failed on first attempt wait 20 seconds before re-entering. Three long beeps indicate the lock bolt is jammed. Release the handle and re-enter code.

Locking:

Close door and turn handle fully to closing position. The lock is secured. Control blocking status by trying to turn handle back.

Manipulation protection:

Entry of four consecutive invalid codes – keypad is blocked for 5 minutes. During this period, the light flashes every 10 seconds and any key press causes a long signal. After expiration, entry of two more invalid codes, restarts the 5 minute blocking period.

Safety reference:

All codes are to be securely stored. Do not use personal data (i.e. Birthdays, telephone numbers etc.) as the code. Change the factory code before you start using the safe!

Activate the second opening code: (see fig. B)

Press and hold Key [1] until double signal. The light remains on during the following actions.

- Enter main code.
- Enter Secondary code twice (Double signal after each)

(The secondary code can be changed like the main code. With the main code, the secondary code can be deleted. The main code cannot be deleted.)

Time Delay (max.99 min) and open window (max. 19 min)

Press and hold key « 9 »

until double signal.

The light remains on during the following actions.

- enter manager code (double signal)
- enter time delay and open window time, f.i. 2612 for 26minutes time delay and 12minutes open window (double signal)
- repeat values (double signal)

Note: changing the time delay values can only be done in open window time.



What if...

... you hear a long beep after your combination last digit and the lock does not open?
You are entering a not valid combination. Repeat the operation making attention you are entering the correct code.

... light signal flashes every 10 seconds, and, when you push a button you hear a long beep?
You entered 4 times a wrong combination and the lock is in time penalty. Wait 5 minutes and try again. Two more consecutive invalid codes will restart additional 5 minutes penalty period.

... you do not hear any beep when you push a button?
Replace the battery. If the problem is not solved, call your service centre.

... you can open but you hear a long sequence of beeps after your combination last digit?
Immediately replace the battery. (use only high quality 9V Alkaline-batteries)

Change code: (with safe door open, see fig. C)

Press and hold Key [0] until double signal. The light remains on during the following actions.

- Enter old code (double signal)
- Enter new code (double signal) and repeat new code (double signal)

In case of entry errors (long signal), the old code remains valid.

Delete the secondary code: (see fig. D)

Press and hold Key [3] until double signal. The light remains on during the following action.

- Enter main code.

The secondary code is deleted.

Current supply / Battery change

A series of signals indicates that the battery is weak and must be replaced.

Use only high quality 9 V ALKALINE-battery!

Battery change:

Remove battery cover at the bottom of the keypad by pulling it down. Remove battery and replace them with a new high quality 9 V ALKALINE-battery.